

LED Motion Sensor Flood Lights

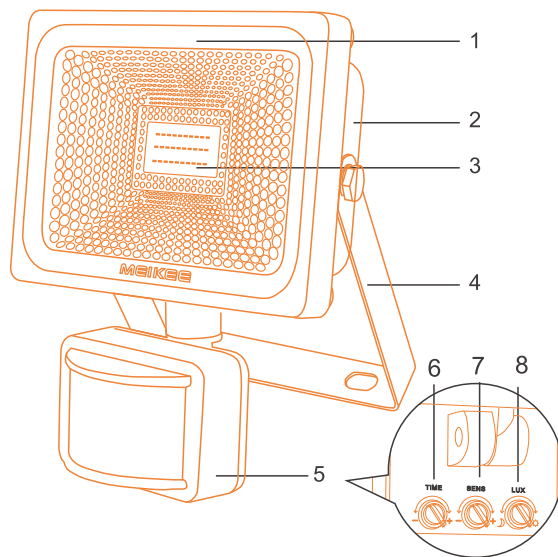
Thank you for purchasing our lights. To ensure safety, Please follow the instructions to installing and commissioning.

Precautions

1. Please make sure the parts are complete and device is normal when you open the package.
2. Cut off your power supply before installing and wiring.
3. Once the line is broken, please cut off the power immediately and stop using it.
4. Input voltage rang must be based on the requeestion of the lights.
5. Prohibited improving design for the product within the warranty period.

SKU	64000017-DW	64000019-DW	64000018-DW	64000020-DW
Lamp Wattage	10W	20W	30W	50W
Input Voltage	US/JP 90-120VAC EU 200-240VAC	US/JP 90-120VAC EU 200-240VAC	US/JP 90-120VAC EU 200-240VAC	US/JP 90-120VAC EU 200-240VAC
Input Current	300mA	600mA	900mA	1500mA
Frequency	50/60 Hz	50/60 Hz	50/60 Hz	50/60 Hz
Brightness	1000LM	2000LM	3000LM	5000LM
CRI	>70	>70	>70	>70
Beam Angle	120°	120°	120°	120°
Color	Black	Black	Black	Black
Color Temperature	6000 K	6000 K	6000 K	6000 K
Illumination Time (single detection)	10-600s adjustable	10-600s adjustable	10-600s adjustable	10-600s adjustable
Detection Range	1-12m adjustable(26°C)	1-12m adjustable(26°C)	1-12m adjustable(26°C)	1-12m adjustable(26°C)
Detection Type	Pyroelectric infrared sensor	Pyroelectric infrared sensor	Pyroelectric infrared sensor	Pyroelectric infrared sensor
Waterproof	IP66-Lamps, IP64-Sensor	IP66-Lamps, IP64-Sensor	IP66-Lamps, IP64-Sensor	IP66-Lamps, IP64-Sensor
Ta	-25°C - 40°C	-25°C - 40°C	-25°C - 40°C	-25°C - 40°C
Exposed wire	1.5m	1.5m	1.5m	1.5m
Accessories	Install the screw package	Install the screw package	Install the screw package	Install the screw package

Components and Structure

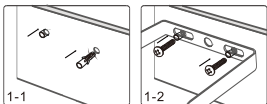


- 1 Front cover of the lamp
- 2 Back cover of the lamp
- 3 LED lamp beads
- 4 Mounting bracket of the lamp
- 5 Sensor detector
- 6 "TIME": Adjust the illumination time for a single detection (10s-600s)
- 7 "SENS": Adjust the sensitivity of PIR (Passive Infrared Detector)
- 8 "LUX": Adjust the light work modes

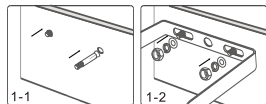
How to install

1. Put the bracket onto the prepared mounting hole and then fasten the device with the screw.

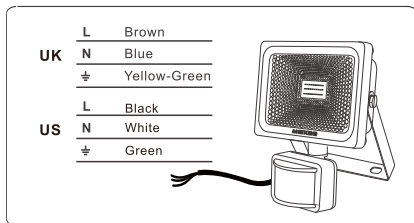
10W-20W



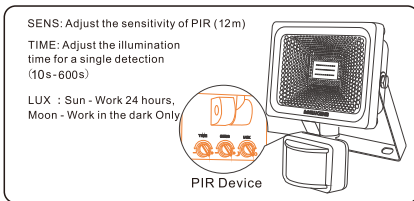
30W-50W



2. Prepare wiring work. Please note that each country wiring standards may be different, You can consult the table below. After connect the wiring, You can adjust the direction of the sensing head.



3. According to your own actual needs, adjust the SENS, TIME, LUX knob which is at the bottom of the sensor head.



3

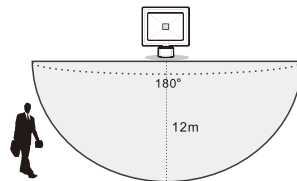
4. Complete the work of wiring.
5. Reset the SENS, TIME, LUX knob where the bottom of motion sensor part.

SENS: Turn up to the maximum position, Detection distance up to 12 M, To the Minimal, 1 m only.

TIME: Turn up the knob to maximum position, The lamp will stay on the Longest lighting time(600s), When select the minimal position, Stay on the shortest (10s).

LUX: Turn up to the "SUN", The lamp will works day and night, To the " Moon" ,works in the dark only.

Application scope



Detection angle : 180 degrees, Horizontal Detection distance : 12 meters,
Installation height:2.5 meters.

Notice



PIR Lights detection distance be affected by ambient temperature, If the temperature is closer or higher than human body temperature, The detection distance is shorter, Which mean you need to adjust the sensing settings.

Free-Worry Replace

1. The light was smashed when it was delivered.
2. PIR doesn't work or Sensor failed after some days.
3. Induction device is not waterproof, full of water.
4. The light just kept flashing or staying on all the time.

Maintenance

- 1 To ensure better lighting, please clean the lights at regular intervals.
- 2 Please turn off power supply during routine maintenance.
- 3 Do not use chemicals or corrosive to clean the device.

4