

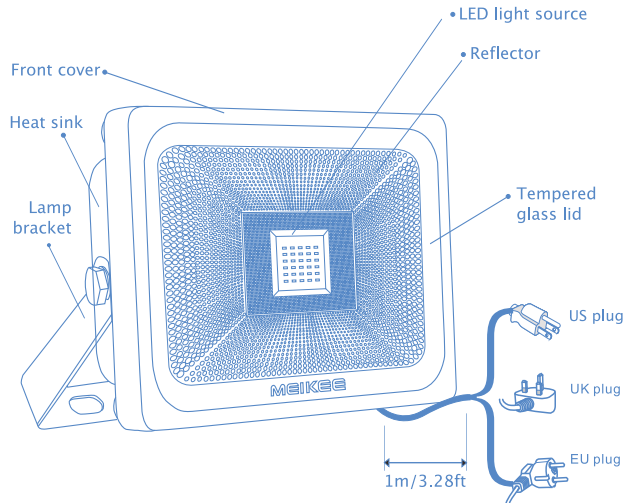
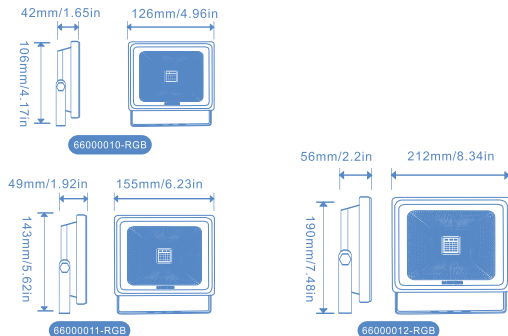
Wireless Remote Control RGB Flood Lights

Thank you for purchasing our LED lights, Please follow the user manual for installation work.

Installation Precautions

1. Please make sure all the parts are normal when you open amazon package.
2. Cut off your power supply before you installing or wiring.
3. Fix the device to the installation location where can support the weight.
4. Connect the power supply after checking that wiring was correct.
5. Adjust the beam angle and color mode you need.

Dimension



SKU	Wattage	Input Voltage	Input Current	Frequency
66000010-RGB	10 W	85-265V AC	300mA	50/60 Hz
66000011-RGB	30 W	85-265V AC	900 mA	50/60 Hz
66000012-RGB	50 W	85-265V AC	1500 mA	50/60 Hz
SKU	Color	Beam Angle	IP Rating	Ta
66000010-RGB	RGB	120°	IP66	-25°C-40°C
66000011-RGB	RGB	120°	IP66	-25°C-40°C
66000012-RGB	RGB	120°	IP66	-25°C-40°C

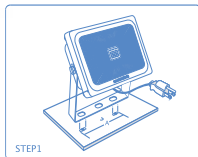
Notice

1. To ensure safety, please invite electrician to install, maintain and check the lamps.
2. Input voltage should be based on the device requestion.
3. Keep the device away from high temperature or damp places, And to ensure that more than 75mm ventilation space cooling.
4. It can not be covered with insulated gaskets or similar material in the lighting state.
5. Please protect the glass when you handling.

How to install

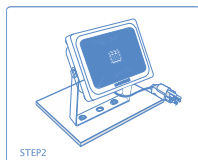
STEP1

Punch hole on the wall or ground, Then fasten the floodlight onto the ready place with screws, and adjust the angle you need.



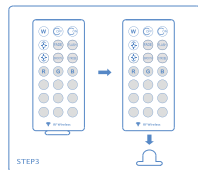
STEP2

Plug into the mains socket, Turn on the power supply and ensure the light working properly.



STEP3

Activate remote control by pull out the insulation sheet, adjust the color mode you like.

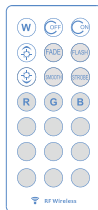


Notice

1. Built-in wireless WF-type mode, 360 degrees transmitter and receiver transmission wireless control.
2. Remote control is not sensitive or remote control distance becomes shorter, replace your button battery pls.
3. Best remote control range- 360 degrees angle and Within 35 meters.
4. WF Signal through wall, The thickness of the wall will shorten the remote control light distance, such as wearing a 15CM wall control distance of about 20 meters.

Controller Button Instructions

REMOTE CONTROLLER



Off: Power off

On: Power on

☀️ : Brightness up/ Long press for fast flashing

☾️ : Brightness down / Long press for slow flashing

R: Color change to Red

G: Color change to Green

B: Color change to Blue

W: Color change to White

Flash: Auto-change colors, fast skip

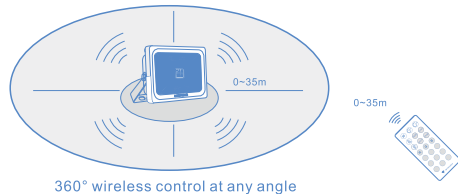
Strobe: Auto-change colors, slow skip

Fade: Auto-change colors, fast shade

Smooth: Auto-change colors, slow shade

Other no-letter buttons: For color-mix

The following is the Infrared Remote Control Diagram



Trouble shooting

If your lamp does not work, Please refer to the following reasons

1. In order to avoid improper installation and use. We recommend you follow the instructions to install and use the lamp.
2. If input voltage does not match, Please ask for help from a professional electrician.
3. If you still can't solve the problem by following the instructions, Please contact the professional electricians or manufacturer directly for help.

Routine maintenance

1. Regularly clean the lights.
2. Turn off power supply before maintain working.
3. Do not use chemicals or corrosive to clean the device.