

MEIKEE 60 LED Solar Flood Lights

Thanks for your purchasing MEIKEE product .To ensure a pleasant shopping experience, please read the instructions before installing and save the manual carefully for future reference.

Installation Precautions

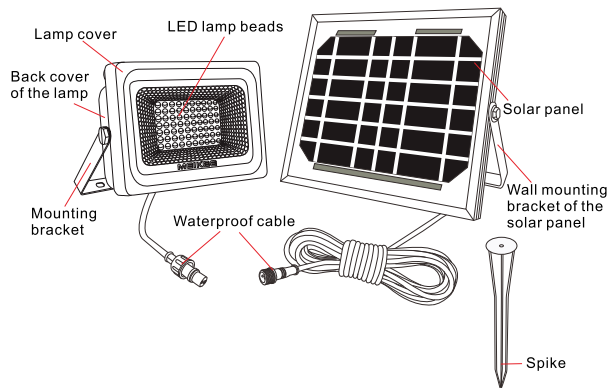
- 1.Please double check the lamp and the solar panel whether are damaged before installing.
- 2.Please ensure the place of installation can support the product's weight, then tighten the screws and fix the lamp.
- 3.Adjust the beam direction according to your needs.
- 4.The solar panels must be placed where can be exposed to sunlight.
- 5.Use a waterproof cable to connect the lamp and the solar panel.
- 6.Keep solar panel away from other lights for normal work at night.

Warning

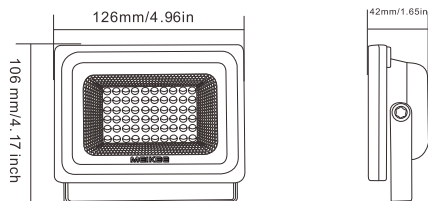
1. In order to avoid damage the products and accessories, please do not arbitrarily refit the lamps.
2. To ensure safety and avoid battery explosion, please keep the light away from the fire and high temperature.
3. To avoid pull off the wire, please do not force pull the wire. Don't violently collide with the product.

Parameters	
SKU	62000030-DW
LED Quantity	60 pcs
Specifications of Solar Panels	6V/3W
Battery Type	18650/4000MAH
Working Voltage	3V/DC
Working Time	12 H
Charging Time	10H
Luminous Flux	300LM
Color Temperature	6000K
IP Rating	IP 66
Ta	-25°C-40°C

Components and Structure

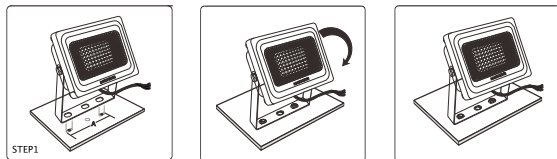


Dimensions

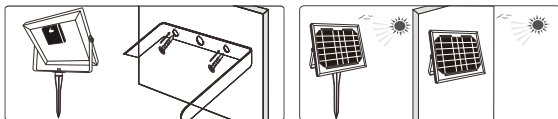


How to install

Step 1: Drill two mounting holes according to the distance between the two screws on the lamp holder. Then, fix the lamp with the screw and adjust the beam direction as needed.

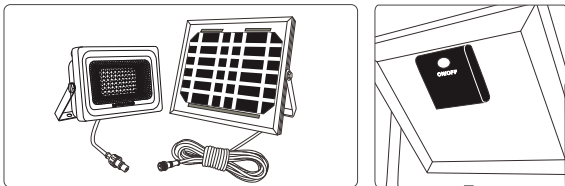


Step 2: Two ways to install the solar panels: <1> Inset the spike into the ground; <2> Install the solar panel on the wall. Note: Both ways have to ensure that the solar panels can be exposed to sunlight.



The back of the solar panel battery box has an ON / OFF switch. Set the switch to ON.

Step 3: Use connectors to connect lights and solar panels.



The lights will be turned on in darkness at night automatically and turned off in bright area at day time automatically.

Turn on the battery box and connect with the lamp, when the solar panel is charging during the day, the red light in the battery box will always on (visible through the transparent pressing switch). When the lamp working at night, the red light in the battery box will turn off.

Rechargeable battery replacement method:

If the solar lights is much dimmer or the illumination time is much shorter at night when the batteries are fully charged, It means the batteries need to be replaced. As the following method:

1. Use the screwdriver to remove the screw on the back of the solar panel, then remove the back cover.
2. Remove the old battery carefully.
3. Put in the same size of the new rechargeable battery; make sure the battery polarity is connected correctly.
4. Put the rear cover back in place and tighten the screws.

Tips

1. Please follow the instruction to install the light.
2. Solar lights should be fully charged by direct sunlight 6-8 hours before first use.

Routine maintenance:

1. To ensure better lighting, Please regularly clean the lamp glass surface.
2. Do not use chemicals or corrosive cleaning.
3. In order to ensure the normal charging and lighting, please clean the cover on the solar panel.